



Trimble Unity

WORK MANAGEMENT



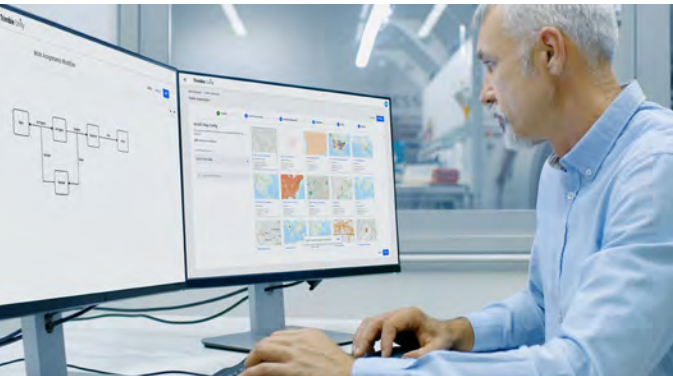
The tools you need to better manage utility assets and field operations

Providing a flexible cloud and mobile solution for accurately mapping and locating utility assets and streamlining field operations, maintenance and repair activities.

Highlights

- ▶ Streamline work planning and dispatching efforts
- ▶ Improve accuracy of GIS and asset data collection
- ▶ Enhance reporting & operational insights
- ▶ Reduce operational costs & maximize resource utilization

Trimble Unity WORK MANAGEMENT



TIME TO WORK. ACCURATELY. EFFECTIVELY.

Build custom forms and workflows

Use the Trimble Unity App Builder to build apps, workflows and smart forms to streamline your field operations. Follow a guided step-by-step wizard to create GIS-centric apps, with seamless support for Esri® ArcGIS® Identity, Web Maps and Dashboards.

Capture accurate 3D positions and GIS data

Capture high accuracy GPS positions in real-time. Offers the flexibility to run on the full line of Trimble rugged handheld computers and GNSS receivers, providing real-time GIS data collection of accurate 3D positions and authoritative asset information.

Efficiently manage, dispatch and track work progress

Search, select and prioritize asset and work assignments. View crew locations and manage and track progress using a web browser. Allow technicians to view, manage and prioritize their work, either from a list or map. Crews can utilize optimized driving directions, and progress through configured workflows to complete work assignments.

Smart, configurable data collection forms and tools

Configure intelligent forms that can be tailored to fit any field workflow. The data collection forms support default values, conditional attributes, business rules, barcodes, digital photos and a configurable list of work related items such as labor, equipment, material usage and completion codes.

Real-time operational insights with Esri® ArcGIS®

Leverage the full capabilities of the Esri ArcGIS platform to create and share location-aware data visualizations and analytics across the organization using ArcGIS® Web maps and Dashboards with data collected and managed in Trimble Unity Work Management. Providing real-time operational insights, driving operational efficiencies and informed decision making.

Ready for enterprise integration

Unlock back-office data with the Trimble Unity mobile. Streamline field data collection and work assignments through GIS centric workflows integrated with back office enterprise systems.

Multi-platform support. Powerful when online, still works when offline

Trimble Unity is built to be flexible with applications available for Windows, Android and iOS. Select the right platform for any user, whether a smartphone, tablet, notebook, or rugged Trimble GNSS device. Field technicians can perform their work when a connection is not available. GIS data, basemaps, work assignments and forms are all available offline, and sync automatically when the crew reconnects.



Cloud and mobile GIS powered by 

© 2020, Telog, A Trimble Company. Telog® is a registered trademark and Telogers™ is a trademark of Telog, A Trimble Company. Trimble® is a registered trademark of Trimble, Inc. Windows® is a registered trademark of Microsoft Corporation. Verizon Wireless™ is a trademark of Verizon Trademark Services. Specifications within this brochure are subject to change without notification. (12/01/2020)

Requirements
 Google Chrome Browser for the Trimble Unity web application.
 Android version 5.0 or later.
 iOS version 8 or later.
 Windows 10
 ArcGIS Online/Enterprise Portal. Required to support ArcGIS Web Maps and Dashboards in Trimble Unity.

IRVINE OFFICE, CALIFORNIA, USA
 18500 Von Karman Avenue,
 Suite 260, Irvine, CA 92612
 +1 (949) 892-6120

CORK OFFICE, IRELAND
 R.o.W : Trimble Navigation Limited
 NSC Campus, Mahon, Cork Ireland
 +353 21 230 9328

**TELOG (ROCHESTER OFFICE),
 NEW YORK, USA**
 830 Canning Parkway
 Victor, New York 14564
 +1 (585) 742-3000

TrimbleWater_ContactUs@trimble.com
 www.trimblewater.com

