

For your automation solutions

Collaborative Automation Partner Program

Unify your control and
supervision system



Schneider Electric
and **AREAL**



Merlin Gerin
Square D
Telemecanique

Schneider
 **Electric**
Building a New Electric World

> Joining forces to achieve a unified global automation system



AREAL and Schneider Electric are pooling their expertise to offer a global, coherent system for automating your processes.

Sharing information to ensure uniqueness of data

More than just a simple data import/export function, the dynamic link between TOPKAPI and Unity Pro allows common data to be shared effectively throughout the lifetime of a project: variables can be added or modified as required in either tool.

Structuring capability for greater efficiency

Structuring variables is a way of being able to define custom objects and use them globally without having to deal with each individual component in detail. The global instance of an object can be created in one single operation, thus avoiding the need for detailed subset testing.

Data linking

Already used successfully for several years in TOPKAPI with the SOFTLINK wizard, the technique of data linking has become a two-way process with Unity Pro. Now more open and dynamic, data linking means that the tool can be tailored more specifically to each part of the project and each area of application while continuing to use common data.

Supervision designed for automation engineers

TOPKAPI is supervisory software designed by PLC experts offering all the functions of a full SCADA system:

- Data acquisition
- Processing and formatting of control system data
- Fault/log management
- Animated graphic mimics
- Client/server multistation control
- Batch process recipes
- Reports and summaries
- Open-access, for integration in MES/ERP systems

To facilitate and accelerate the application creation process, TOPKAPI offers advanced functions to exploit the full potential of the link with Unity Pro:

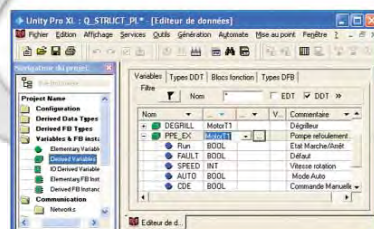
- User-friendly creation and handling of generic objects
- Object inheritance
- Library of graphic symbols
- Layer management
- Extended zoom functions



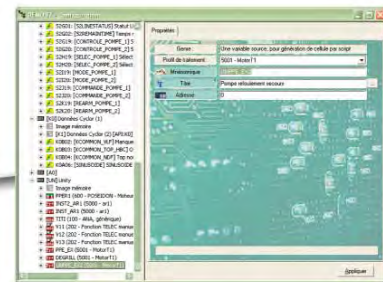
1• Defining a structured variable in Unity Pro



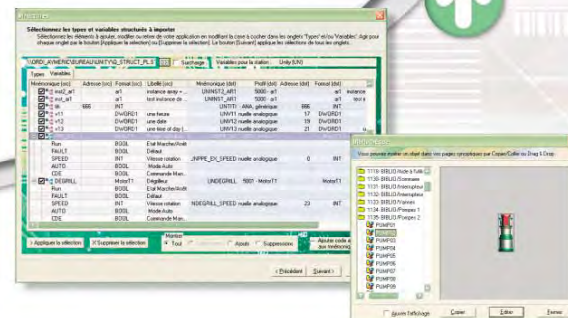
2• Declaring several instances of elementary and structured variables



5• The Unity Pro project is updated by Topkapi



4• The user modifies Unity Pro variables in TOPKAPI or creates new ones



3• TOPKAPI reads the elementary variables and structured data from Unity Pro and the user decides whether to integrate them in the supervision system

> Choosing performance and efficiency

The partnership established between Schneider Electric and AREAL offers process automation solutions that are quick and easy to implement.

- **Unique** input data
- **Structured data** facilitating setup and reducing the volume of information to be handled
- **Coherent** data
- **Reduced** parameter-setting, testing and maintenance costs



Wide-ranging services supported by Schneider Electric's worldwide presence

- **Permanent availability, worldwide**
With more than 5000 sales outlets in 130 countries, you will always find a complete range of products that meets your needs and conforms to local standards.
- **Global technical support**
Schneider Electric provides technical assistance around the world, with experts at your service to help you achieve the optimum solution for your particular application.



Alongside its TOPKAPI range of supervisory software, AREAL also offers some of the market's leading products. TOPKAPI is recognized for its reliability and ease of use, and is widely used in all industrial sectors, from single-station applications to redundancy and the most complex client/server architectures.

- **Innovation**
Drawing on their expertise in the field of industrial automation, AREAL believes that a tool's performance should be measured by the number of services and efficiencies it offers. The company therefore dedicates a significant share of its resources to researching innovative solutions with the aim of supplying state of the art products.

- **Satisfaction**
In addition to product quality, users expect rapid, customized solutions to any problems should they arise. AREAL focuses on end results, and is committed to providing customers with technical support centered around competence, effective listening capability and availability.

www.arel.fr