



COMlog 2 measures rainfall events for waste water specialists, OnSite

providing accurate data, helping to reduce the risk of blockages and flooding

To ensure sewer systems are operating effectively, and to reduce the risks of blockages, water companies often carry out flow surveys within their networks. A flow survey will indicate how the sewer is performing day-to-day, as well as how it copes with the added water from rainfall events.

During any flow survey, water companies will also record the amount of rainwater that is delivered into the sewer system. The recognised way of doing this is through the use of rain gauge.



Tipping bucket rain gauges work by recording the number of times the bucket tips when collecting rainwater. The tipping mechanisms have a specific capacity, which when multiplied by the number of tips, calculates the amount of rainfall during a specific event.

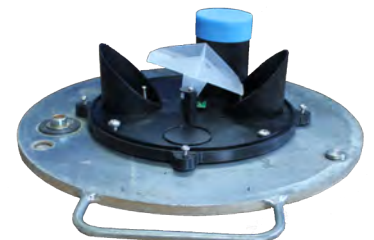
When OnSite, one of the UK's leading waste water specialists, was looking to make their rain gauges more efficient, they required a data logger that has the ability to automatically upload the collected data to a central point. Not only

would this save time, but it would also be more cost effective.

To meet OnSite's requirements HWM proposed **COMLog 2**, an innovative logger that uses latest GPRS technology for low cost data transmission.

COMLog 2 is compatible with any meter that uses pulse counting technology to take readings, making it perfect for OnSite's specific requirements. Automatically uploading data to a central server has numerous benefits for OnSite and their customers.

The data is available almost immediately, meaning it can be utilised more quickly and more efficiently. It is also much more cost-effective as automatic data transfer reduces the requirement for regular site visits for manual data downloads.



At HWM we've been pleased to be working in collaborative partnership with OnSite, delivering effective data monitoring solutions. In turn, OnSite are particularly satisfied with both the versatility and reliability of COMLog 2, which has proved ideal for rainfall measurement applications.



About COMlog 2

COMlog 2 is the highly versatile data logger designed to be a cost-effective, multi-application data logging solution.

Developed for flexibility, COMlog 2 is compatible with any sensor or meter that has a volt-free pulsed output.

Particularly effective for smart metering, COMlog 2 provides businesses with an efficient way of managing water and energy consumption and reducing costs.



www.hwmglobal.com

sales@hwm-water.com

T: +44 (0) 1633 489 479

F: +44 (0) 1633 489 479